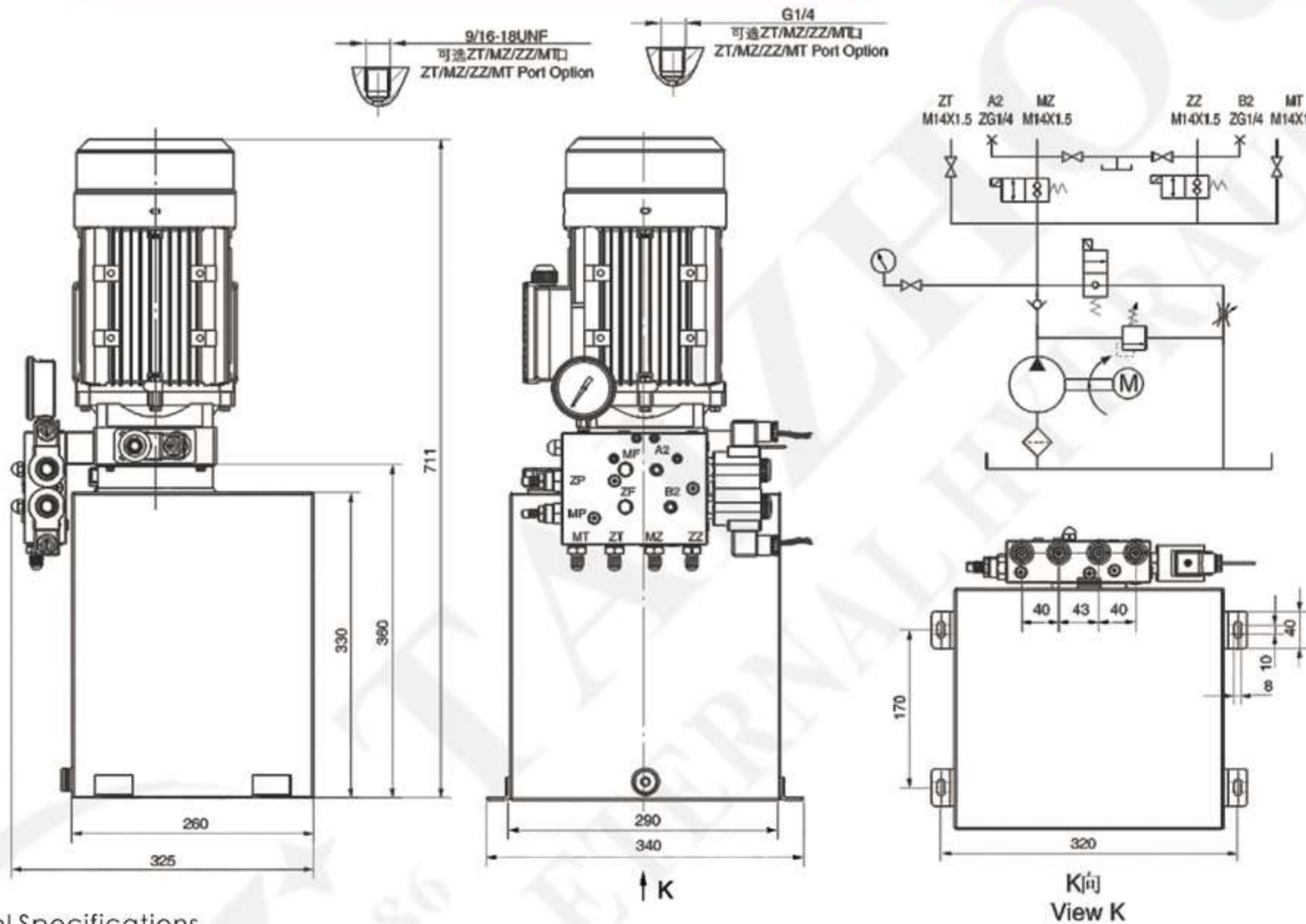


I Product Introduction 产品简介

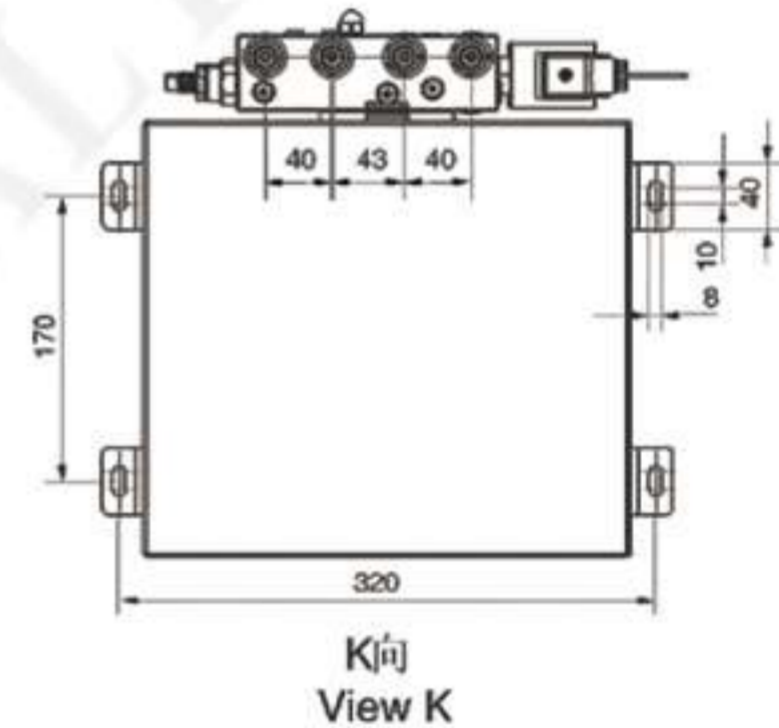
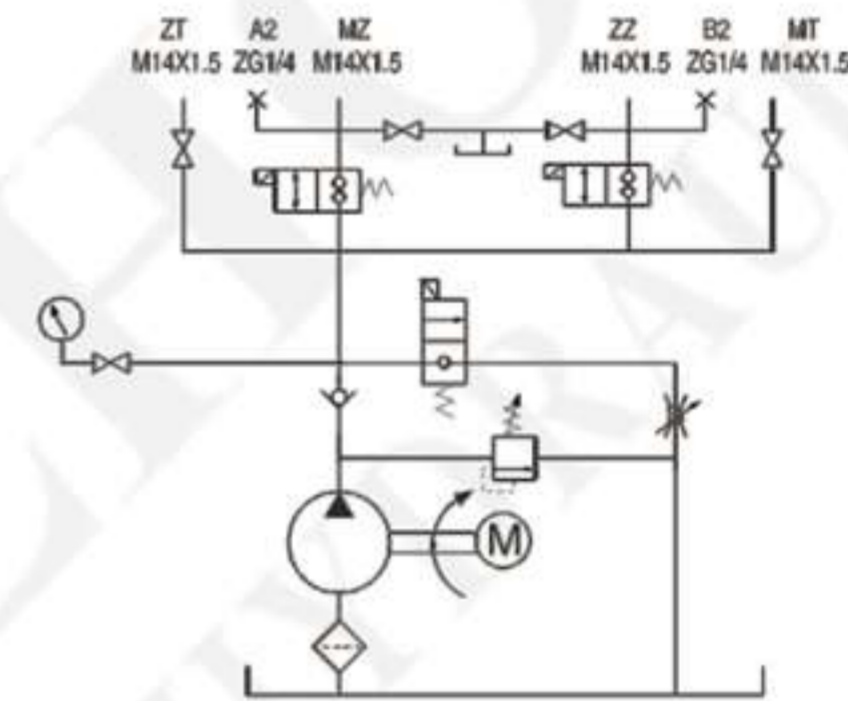
此液压动力单元采用零泄漏双向止回阀实现两条油路的完全隔离，使得两条油路的上升和下降动作互不干扰，是多缸单独升降系统的理想液压源：结构中的四个截止阀用于系统电源故障时，安全实现应急回油。该系列动力单元广泛应用于大剪升降机。

Equipped with the zero leakage double-check solenoid valves, this power unit fulfils the complete separation of the two independent circuits, which are respectively for the main platform and subordinate platform of the double scissors lift. Four cut-off valves are used for emergency oil return in case of power failure. By increasing the number of the solenoid valves, it is easy to get more independent circuits and to control the corresponding cylinders.

I Outline Dimension 外形尺寸图



I Hydraulic Circuit Diagram 系统工作原理



I Model Specifications 型号规格说明

Model 型号	电机电压 Motor Volt	电机功率 Motor Power	额定转速 Rated Speed	油泵排量 Displacement	溢流阀压力 System Pressure	邮箱容量 Tank Capacity	电磁阀电压 Solenoid Valve Volt
HPU5-G2.1J3H30E/MCDBN2	220VAC	2.2KW	2800RPM	2.1ml/r	25MPa	25L	24VDC
HPU5-G2.5J4H30E/MCDEN2	380VAC			2.5ml/r			220VAC

说明：1.如需不同流量的泵、压力、电机功率等系统参数，请查看液压动力单元型号说明或与销售联系。

Remark: 1. Please go to page 1 or consult our sales engineer for the different pump displacement, motor power or tank capacity.

I Special Notes 注意事项

- 1.此动力单元不可连续运转（1分钟ON，9分钟OFF），可重复工作。
- 2.安装前必须保证油缸、油管、接头等液压元件清洁无任何杂质粘附。
- 3.液压油粘度应为15~68CST，应清洁无杂质，推荐使用N46号液压油。
- 4.本液压动力单元适用于立式安装。
- 5.首次启动运行系统后，应立即检查油箱中的油量是否充足。
- 6.系统使用第一个100小时后，应更换液压油，以后每3000小时更换一次液压油。

- 1.The power unit is of S3 duty, which can only work intermittently and repeatedly and repeatedly, ie., 1minute on and 9minutes off.
- 2.Clean all the hydraulic parts concerned before mounting the power unit.
- 3.Viscosity of the hydraulic oil should be 15~ 68 cst, which should also be clean and free of impurities.N46 hydraulic
- 4.This power unit should be mounted vertically.
- 5.Check the oil level in the tank after the initial operation of the power unit.
- 6.Oil changing is required after the initial 100 operation hours, afterwards once every 3000 hours.